

IMPORTANT: READ BEFORE USING

1. Technical data

	PP (polypropylene) PUMP	PPS (polyphenylene sulfide) PUMP
Pump Type	Lever Action	Lever Action
Pump Body #1 Color	Blue	Black
Max. Flow	10 oz / Stroke	10 oz / Stroke
Max. Fluid Temperature	140° F 160° C	140° F 160° C
Bung Adapter	1-1/2" & 2"	1-1/2" & 2"
Wetted Materials	PP, Steel, Polyethylene (PE)	PPS, SS304, SS316, PTFE, PVDF
Max. Viscosity	1,000 SSU	1,000 SSU
Application	Diesel, Kerosene, Lubricant	Gasoline, Diesel, Kerosene, Lubricant, Water, Alcohol, Acids, Alkali, Solvents, Chemicals

2. Assembly and Installation

Check to see if all parts are included.

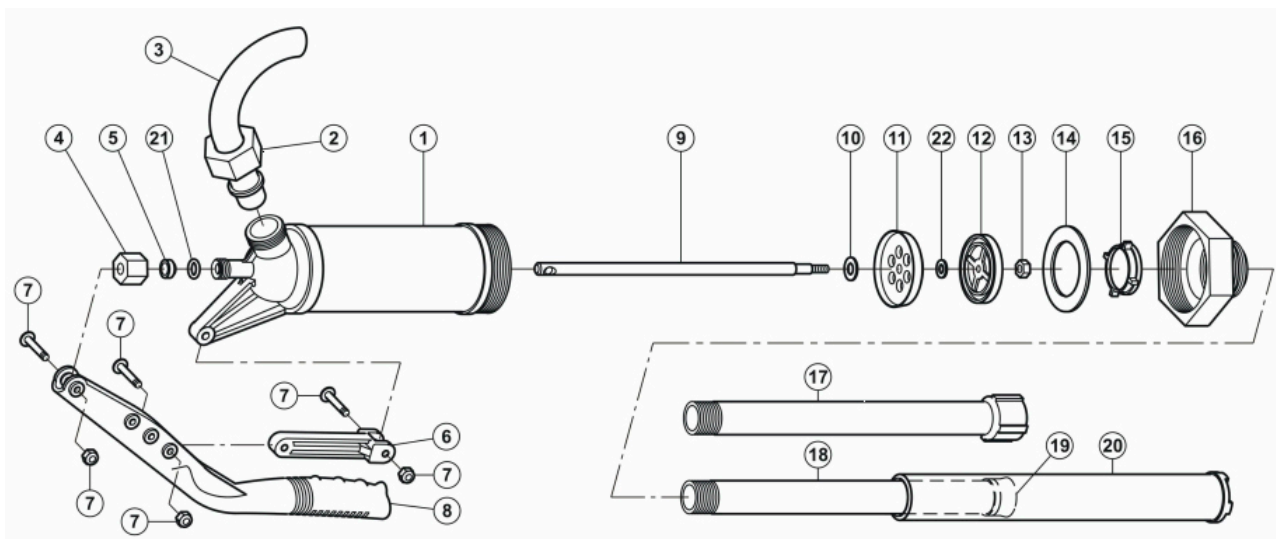
Install pump handle (Ref No. 8) to piston rod (Ref No. 9) with two sets of screws and nuts (Ref No. 7).

Install discharge spout (Ref No. 3) and screw the nut (Ref No. 2) tightly to the outlet thread of pump body (Ref No. 1) and make sure discharge spout is secured.

Screw the assembled suction tube (Ref No. 17, 18 & 20) to inlet of pump body.

Insert this pump into the opening of drum. Then screw the bung adapter clockwise into drum.

The pump is now ready for operation. Liquid should begin to flow after several strokes. If any leakage occurs, tighten piston rod nut (Ref No. 4) on top of pump carefully. Over tightening this nut will damage seal, make the pump difficult to operate, and may strip nut.



Parts List

Ref No.	Description	Ref No.	Description
1	Pump Body	12	Rod Plate
2	Coupling Nut	13	Valve Nut
3	Spout	14	Foot Valve Seal
4	Piston Rod Nut	15	Base Plate
5	Piston Rod Seal	16	Base
6	Handle Lever	17	Tube
7	Nut & Screw	18	Telescopic Tube
8	Handle	19	Tube Seal
9	Piston Rod	20	Tail Telescopic Tube
10	Valve Plate	21	O-ring
11	Valve Base	22	Valve

3. General Safety Information

Always carefully read, thoroughly understand and follow the pump operating instructions. Inspect your pump thoroughly to verify its proper assembly and then use this pump correctly with care for the purpose. Failure to do so may cause damage or personal injury, and will invalidate the warranty. Retain instructions for future reference.

Prior to use, always carefully and thoroughly read and understand the OSHA information contained in the Safety Data Sheet supplied for the chemical which is to be pumped. Contact your fluid supplier to check for compatibility with pump prior to installation and operation.

Pump should be washed out before it is used since processing lubricants may contaminate the fluids.

Wear protective clothing (goggles, face masks, long sleeves, long pants, gloves, aprons, etc.) as set forth in the OSHA Safety Data Sheet when pumping any hazardous chemicals.

When pumping flammable liquids, pump containers should be grounded to avoid static electricity and pump must be stored in a ventilated area after use.

To stop siphoning, rotate handle 1/4 turn (leave handle in horizontal position).

After using pump, position handle straight down, liquid will drain back to container.

If pump is removed from drum, rinse it thoroughly in a liquid that is compatible with both the pump and the fluid being pumped.

Regularly check pump and suction tubes for leaks. Leaks in the suction line or in pump housing will cause inefficient pumping and loss of prime.

Pressol Schmiergeräte GmbH

Parkstraße 7
93167 Falkenstein | Germany
Tel. +49 9462 17-0
Fax +49 9462 17-208
info@pressol.com
www.pressol.com